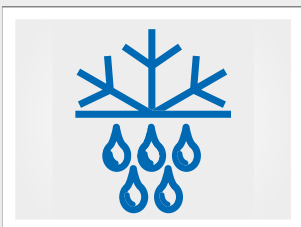


LABO 125 ESSENTIAL

Equipment

- 2 shelves
- Automatic defrosting
- Condensate evaporation
- Digital temperature display
- Visual and audible alarm signal
- Standalone or undercounter installation



Automatic defrosting and condensate evaporation

Time limit and temperature monitoring. No manual defrosting required. Condensate evaporates in the refrigerating machine room.



User friendly

Electronic temperature controller can be installed into furniture front.

- **External housing** made from galvanised sheet steel (rust-proof), with white, anti-scratch powder coating. Length of the plug cable: approx. 2.8 m.
- **Adjustable feet** to compensate uneven floors.
- **Interior made from** impact-resistant, white plastic with moulded-in shelves.
- **Interior** can be customised (surcharge may apply). See optional equipment.
- **Extra-thick energy saving insulation**, made from high-quality, compression-moulded and environmentally friendly material.
- **Lockable door** with easy-to-replace plastic magnetic seal frame.
- **Door hinge** on the right-hand side (by default, see illustration), or the left-hand side, can be retrofitted.
- **Forced-air cooling** switches off automatically when you open the door, ensures a uniform temperature and minimizes temperature deviations.
- **Automatic defrosting** with time limit and temperature monitoring.
- **Condensate evaporates** in the refrigerating machine interior.
- **Membrane keyboard** with digital temperature display.
- **Warning functions** with visual and audible alarm signal in the case of temperature deviations.
- **Statically ventilated refrigerating machine**, hermetically sealed, energy saving, low-noise, easy to service.

Specification

Capacity	120 litres
Temperature setting	approx. +2 °C to +15 °C
Voltage	220 – 240 V, 50 Hz
Power consumption	125 watts
Normal consumption	0.55 kWh/24 h
Admissible ambient temperature	from +10 °C to +38 °C
Heat emission (max.)	123 watts
Exterior dimensions (including door handle and distance from wall)	w x d x h = 54 x 54 x 81 cm
Useable dimensions	w x d x h = 43 x 33 x 59 cm *
Exterior dimensions with door open at 90°	w x d = 54 x 106 cm
Shelf size	w x d = 43 x 33 cm
Max. shelf load	25 kg
Weight (net./gross)	39 kg/48 kg
Temperature deviation ΔT	+/-1.12 °C
Noise emission	41.4 dB(A)

**(usable depth: 15cm less)*

Optional equipment

KIRSCH refrigerators and freezers offer numerous equipment options that can be retrofitted.



Glass door

See clearly: avoid opening the door unnecessarily to inspect the contents.



Condensation tray

for manual draining of condensation water.



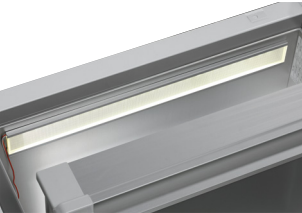
Plastic-drawer on roller runners

Up to eight drawers are possible in total.



Additional length and cross dividers

for the optimum organisation of your refrigerated goods.



Interior lighting ceiling

Optional, optimised and energy-efficient illumination of the interior via LED light strip.



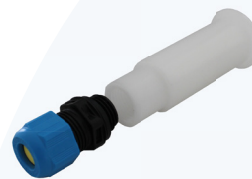
Additional Shelves

Wire shelves, robust with load capacity up to 40 and 50 kg.



Decorative frame

Made of stainless steel, allows to cover door with a decorative panel (thickness max. 2 mm).



Access Port

Simple insertion of an external temperature sensor with integrated cable feed-through.



Door coupling

Connects the furniture door to the device.



Castors

Can be equipped with steering and fixed castors.

Accessories for temperature documentation



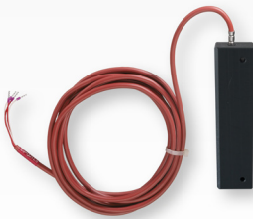
PC-KIT-NET

Automatic temperature documentation and monitoring via your network (LAN connection).



KIRSCH EVOLUTION CLOUD-Module

Maximum storage safety through optimal connectivity and real-time monitoring.



External PT100/PT1000 with cold block

Additional temperature sensor for connection to existing/external monitoring system.

* For more information about our cloud, please contact us.



Philipp Kirsch GmbH
Im Lossenfeld 14
77731 Willstätt
Germany

Phone: +49 (0) 781 9227-0
Telefax: +49 (0) 781 9227-200
info@kirsch-medical.com

www.kirsch-medical.com



Photograph this QR code and learn about our entire product range.